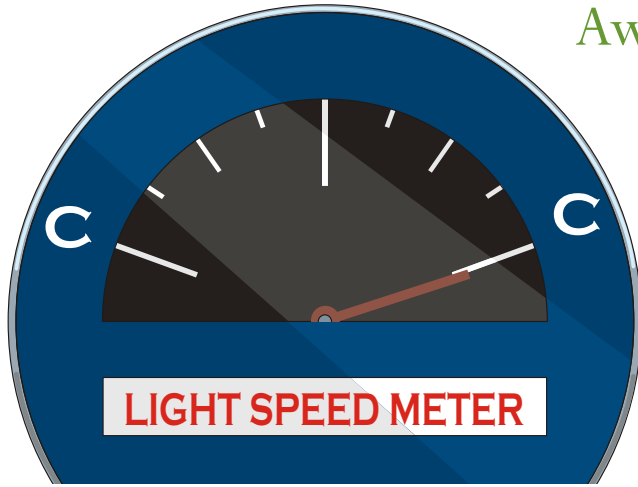


A Light-Speed meter for the Theory of Relativity



Aw, come on man, you don't even need to use the pointer!

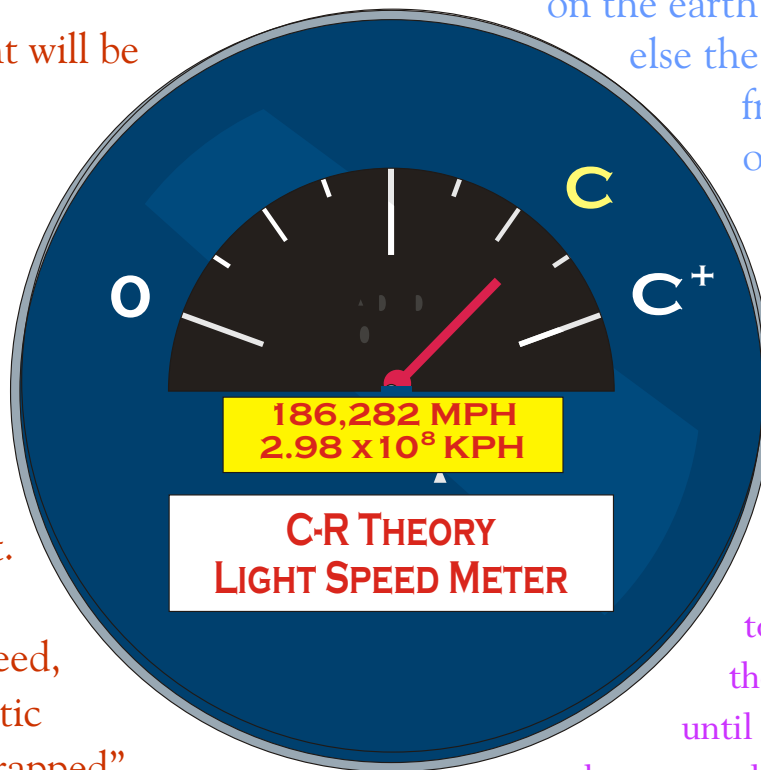
It's always going to read "c" wherever you go, or whatever you do!!

"What a useless invention!"

A Light-Speed meter for the Comedy-Recycling Theory of the Entire Known Universe

Recycling Theory of the Entire Known Universe

The speed of light will be at its minimum possible value at the Schwarzschild radius. This is where the escape velocity equals or even exceeds the speed of light. When light can't travel at light-speed, its electromagnetic energy is "time-trapped", confined, isolated, insulated, and prohibited from communicating.



The speed of light is "c" only on the earth and anywhere else the same distance from the center of the universe.

The speed of light will be at a maximum at the "Great Attractor" at the center of the universe!!

It will decrease to "c" at the earth, then falls off more, until you get clear out to the outer edge, past the 2.7K radiating materials, to the actual speed of 0.